

### **Displaying a Single Image**

To select a single image and display it full-size in the Viewer window, use either of the following two methods.

->Double-click the still image you want to display in the Preview area.

->Click the still image you want to display and then select Display Viewer from the View menu.



#### **Note**

You can open up to 8 Viewer windows simultaneously.

### Viewer Window

The Viewer window displays a full-size version of an image.

Click a part of the illustration below to display more information about that part of the screen.



**Viewer Menu Bar**

For information about each Viewer window menu, click the name of a menu in the following list.

[File menu](#)

[Edit menu](#)

[View menu](#)

[Image menu](#)


[Filter menu](#)

[Help menu](#)

**Viewer Zoom Bar**

Move this slider to [zoom in and out](#) on the image in the Viewer window.

You can click  and

 to zoom in and out.

 **Hint**

You can toggle the zoom bar display on and off by selecting Zoom Bar from the View menu.

**Viewer Title Bar**

The Viewer window title bar shows the file name of the image currently displayed.

**Viewer Status Bar**

Status messages appear in this area.

**Hint**

To toggle the status bar display on and off, select Tool Bar -- Status Bar from the View menu.

**Viewer Scrollbars**

Drag the scrollbars in the desired direction to scroll the Viewer window.

**{BMC tojiru.BMP} Viewer Close Button**  
Click this button to close the Viewer window.





**Save Button**

Click this button to save the image in the Viewer window.



**Print Button**

Click this button to print the image in the Viewer window.



**Image Information Button**

Click this button to display and change information for the image in the Viewer window.



**Zoom In Button**

Click this button to change the mouse pointer to a magnifying glass (zoom in).



**Zoom Out Button**

Click this button to change the mouse pointer to a magnifying glass (zoom out).



**Scroll Button**

Click this button to change the mouse pointer to a hand.



**Pointer Button**

Click this button to change the mouse pointer to an arrow.



**Help Button**

Click this button to display PictureGear™ online help topics.

## **Viewer File Menu**

### **Save**

Overwrite the image in the Viewer window with the current image.



### **Note**

You cannot overwrite video files in AVI, MPEG and QuickTime format.

You also cannot overwrite images in the folder displayed when reading images from an external device (such as a Sony Video or Digital Still Camera, etc.) or another application (DVgate still, etc.).

### **Save As**

Save the image in the Viewer window. You can assign a different file name and [change the file type](#) when you save the image.



### **Note**

Even after images have been saved under new folder and/or file names, one pre-change image will still be displayed.

### **Page Setup**

Review or change the [printer settings](#).

### **Print**

[Print](#) the image in the Viewer window.

### **Print Preview**

Display the image as it would appear if printed. The image appears in a [print preview](#) window.

### **Exit**

Exit the Viewer window.



**Viewer Edit Menu****Undo**

Cancel the previous action.

**Redo**

Perform the action canceled by Undo.

**Copy**

Copy the selected image area to the clipboard.

**Select All**

Select the whole image.

**Clear Selection**

Cancel the selection.

**Image Information**

Display [image information](#). You can also change some of the information.

**Viewer View Menu****Cursor**

Change the mouse pointer to a hand, zoom in magnifying glass (+), zoom out magnifying glass (-), or back to an arrow pointer.

**Tool Bar**

Toggle the toolbars on and off.

**Zoom**

[Zoom in or out.](#)

**Full Screen**

Switches to [full-screen](#) display.

## **Viewer Image Menu**

### **Rotate**

Rotate an image by 90 or 180 degrees to the right or 90 degrees to the left. You can also select Custom to set any angle you choose.

### **Resize**

Zooms in/out by a magnification of 25/50/150/200%. You can also set the magnification to any value. This command changes the size of the image.

### **Flip**

Flip an image vertically or horizontally.

### **Crop**

Trim the image area outside the selection rectangle.

**Viewer Filter menu****HLS**

Adjust the hue, lightness, and saturation values.

**Contrast**

Adjust the contrast.

**Gamma Correction**

Adjust the overall brightness and tint.

**Sharpen Edge**

Sharpen the outline of an image.

**UnsharpMask**

Emphasize the outline of an image.

**Adjust Color Balance**

If distortion occurs, this function automatically adjusts the color and brightness of images.

**Viewer Help Menu**

**Contents**

Select from a list of help topics.

**About PictureGear**

Display version information.

### **Zooming the Viewer Window**

There are three ways to zoom in or out in the Viewer window.

#### **Move the Zoom Bar slider.**

Drag the slider to the right to zoom in and to the left to zoom out.

#### **Select Zoom from the View menu, then click the desired item.**

**Zoom In** - Increases the ratio by one step.

**Zoom Out** - Decreases the ratio by one step.

**25%, 50%, 100%, 200%, or 400%** - Selects that enlargement ratio.

**Fit to Window** - Sizes the images so that all the images in the selected folder fit into the Preview area.


#### **Change the mouse pointer to a magnifying glass.**

To zoom in, click Zoom In and click the left mouse button, or click Zoom Out and click the right mouse button.

To zoom out, click Zoom Out and click the left mouse button, or click Zoom In and click the right mouse button.

**Scrolling the Viewer Window**

Drag the scrollbars below and to the right of the image in the desired direction.

To drag the image itself, click  on the toolbar and then drag the image. Alternatively, you can select Cursor on the View menu, select Hand on the popup menu, and then drag the image.

## Processing Images

You can rotate, zoom in/out, flip, and crop an image.

### To rotate an image

- 1 Select Rotate from the Image menu.
- 2 Click Right 90, Right 180, or Left 90 degrees to rotate the image by the selected angle.



#### Hint

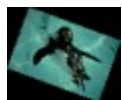
To rotate the image by other angles, click Custom to open the Rotate dialog box and enter the angle you want to use. The positive value shows the clockwise direction and the negative value shows the counterclockwise direction.



#### NOTE

When the image is rotated at certain angles, the image size may change.

For example, 20 degrees rotation.



After the file is rotated, the black areas are also included in the image area.

### To zoom an image

- 1 Select Zoom from the View menu.
- 2 Click 25, 50, 150 or 200% to zoom in/out an image to the selected magnification.




#### Hint

To display other magnifications, click Custom to open the Zoom-In/Out dialog box, and use the slide to select the magnification you want.

### To flip an image

- 1 Select Flip from the Image menu.
- 2 Select Horizontal to flip an image horizontally, or select Vertical to flip an image vertically.

### To crop the selected image area

- 1 Click  on the Viewer window toolbar.
- 2 Drag the selection rectangle around the area you want to keep. To clear your selection, press the Esc key.
- 3 Select Crop from the Image menu to remove the area outside the selection rectangle.



## Using Filters

You can adjust the contrast, gamma correction, hue, saturation, value ,outline and color balance of an image.

- 1 Select the appropriate item from the Filter menu.

### **To adjust the hue, saturation and lightness**

Click HLS to display the [Hue/Lightness/Saturation dialog box](#).

### **To adjust the contrast**

Click Contrast to display the [Contrast dialog box](#).

### **To adjust the overall brightness and tint**

Click Gamma Correction to display the [Gamma Correction dialog box](#).

### **To sharpen the contrast**

Click Sharpen Edge to clarify the outline of an image.

### **To emphasize the outline with a mask**

Click UnsharpMask to emphasize the image outline.

### **To adjust brightness and color distortion**

Click Adjust Color Balance to adjust distorted color and brightness.

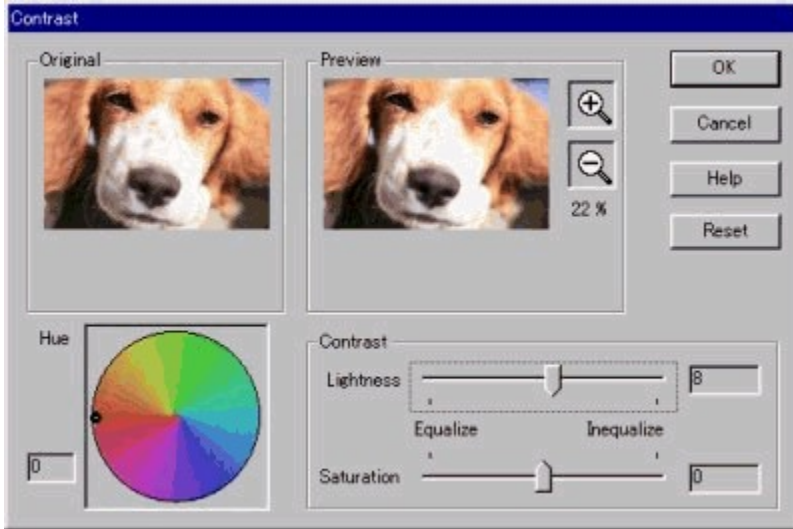
- 2 Move the slider or enter the value directly to adjust the settings.
- 3 Click the + button or the - button to zoom in/out of the preview.
- 4 Click OK to confirm the setting and close the dialog box.

## Note

You cannot overwrite Movie images and slides created from sampled movies.

## Contrast Dialog Box

Adjusts the contrast of the image.



### Preview

Click  and



to enlarge or reduce the image in the Preview window while maintaining its aspect ratios.

### Lightness/Saturation

Change the Lightness and Saturation by moving the slider or entering values. Make adjustments while viewing the image in the Preview window. You can adjust the settings from -100 to 100 (in increments of 1).

### Hue

Change the hue by moving the dot within the circle or entering values. The hue within the color circle will change depending in the saturation and value. Make adjustments while viewing the image in the Preview window and the color circle. You can adjust the settings from -180 to 180 (in increments of 1).

### Reset

Return the settings to the default values. The Reset button becomes visible whenever the settings have been changed.

### Cancel

Cancel the changes and close the dialog box.

### Help

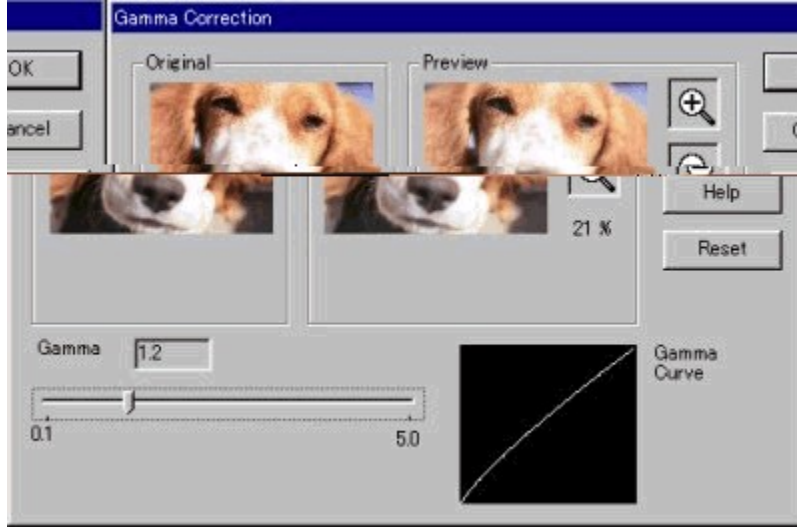
Display help information.

### OK

Update the settings and close the dialog box.

### Gamma Correction Dialog Box

Adjusts the overall brightness and tint of the image.



#### Preview

Click  and

 to enlarge or reduce the image in the Preview window while maintaining its aspect ratios.

#### Correction Value

Change the gamma correction by moving the slider or entering values. Make adjustments while viewing the image in the Preview window and the Gamma Curve. You can adjust the settings from 0.1 to 5.0 (in increments of 0.1).

#### Reset

Return the settings to the default values. The Reset button becomes visible whenever the settings have been changed.

#### Cancel

Cancels the changes and closes the dialog box.

#### Help

Displays help information.

#### OK

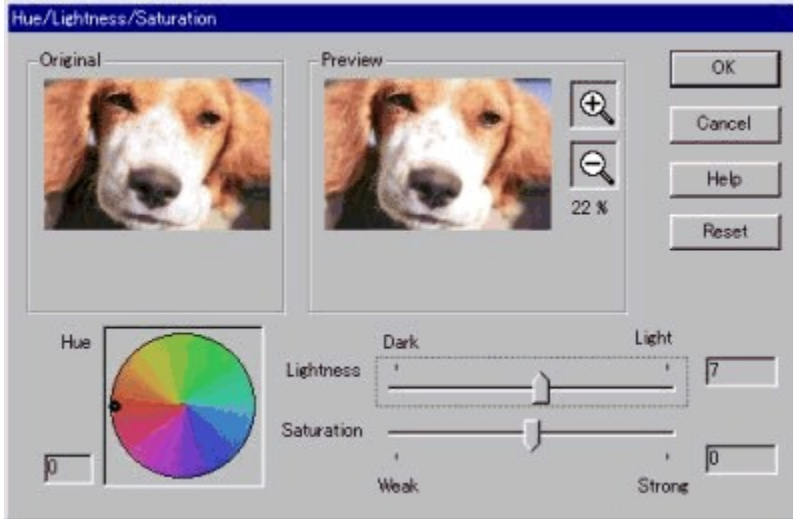
Update the settings and close the dialog box.

#### Hint

When you view an image that was read from a digital camera, the image may appear dark. If this occurs, you can make the image more attractive by using the gamma correction to adjust the overall image brightness and tint.

### Hue/Lightness/Saturation Dialog Box

Adjusts the hue (color), value (brightness), and saturation (color depth) of the image.



#### Preview

Click  and

 to enlarge or reduce the image in the Preview window while maintaining its aspect ratios.

#### Hue

Change the hue by moving the dot within the circle or entering values. The hue within the color circle will change depending in the saturation and value. Make adjustments while viewing the image in the Preview window and the color circle. You can adjust the settings from -180 to 180 (in increments of 1).

#### Lightness/Saturation

Change the saturation and value by moving the slider or entering values. Make adjusts while viewing the image in the Preview window and the gamma curve. You can adjust the settings from -100 to 100 (in increments of 1).

#### Reset

Return the settings to the default values. The Reset button becomes visible whenever the settings have been changed.

#### Cancel

Cancel the changes and closes the dialog box.

#### Help

Display help information.

#### OK

Update the settings and close the dialog box.


#### Hint

To create a black and white image, decrease the saturation to -100 and adjust the value.



### **Fit to Display Window Button**

Displays images sized to [fit the Display window](#).

 **Undo Button**

Undoes the previous operation.



**Right 90 Button**

Rotates the image 90 to the right.



### **Left 90 Button**

Rotates the image 90 to the left.





### **180 Button**

Rotates the image 180 to the right.



**Flip Vertically Button**  
Flips the image vertically.



**Flip Horizontally Button**  
Flips the image horizontally.



**Repeat Button**

Repeats the previous operation.

 **Viewer Minimize Button**


Click this button to minimize the Viewer window.

 **Viewer Maximize Button**

Click this button to maximize the Viewer window.

## Switching from the Viewer Window to Full Screen Display

With full screen display, the slide displayed in the Viewer window is expanded to fill the entire screen.

- 1 Select Full Screen from the Display menu, or click the  Full Screen button.

The slide is displayed across the entire screen, with the following buttons in the screen's upper right corner.

### **Close Button**

Click this button to close the Viewer window.

### **Restore Button**

Click this button to cancel full screen display and return display to its former condition.

### **Minimize Button**

Click this button to minimize the Viewer window.

### **Menu On/Off Button**

Click this button to toggle Viewer window menu bar display on and off. When depressed, a check mark appears in the button and the menu bar is displayed. The check mark and menu bar both disappear when the button is released.

### **Note**

Even after images have been saved under new folder and/or file names, one pre-change image will still be displayed.

